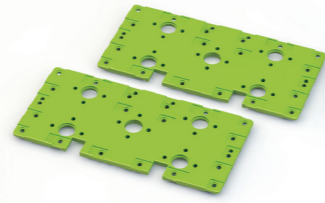




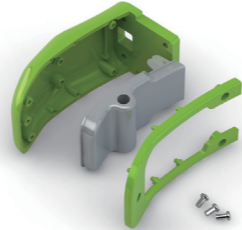
X16 DRS-0101
HerkuleX Servo



X4 DRB-0006
Dummy Servo
(BH/M 2.6X8.0 Bolt attached)



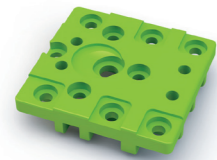
X4 DRB-0001
Front / Back



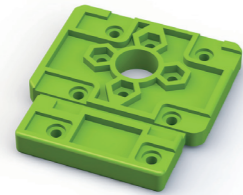
X4 DRB-0002
Hand



X4 DRB-0003
Foot



X40 DRB-0004
Universal Plate



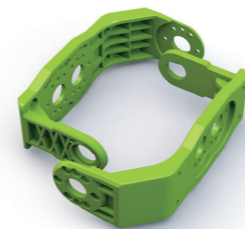
X8 DRB-0005
Ankle Plate



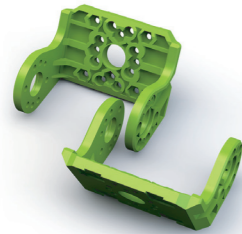
X6 DRB-0008
U1-type Bracket



X8 DRB-0009
U2-type Bracket



X6 DRB-0010
U3-type Bracket



X8 DRB-0011
U4-type Bracket



X1 DRB-0007
Battery Case & Holder



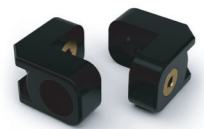
X1 DRC-005T
Controller



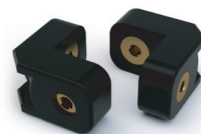
X1 DRL-0728
7.4V Li-Po Battery
(3,000mAh)



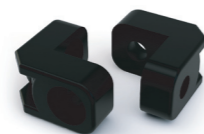
X20 DRH-1001
Horn (Plastic)



X70 DRJ-0001
L-type Joint
(Single Nut)



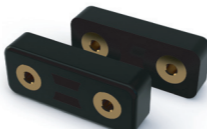
X10 DRJ-0002
L-type Joint
(Double Nut)



X40 DRJ-0003
L-type Joint
(Hole only)



X10 DRJ-0004
L-type Joint
(10.9mm, Hole only)



X60 DRJ-0006
L-type Joint
(12.5mm, Double Nut)



X20 DRJ-0007
L-type Joint
(16.0mm, Hole only)



X20 DRJ-0008
V-type Joint
(12.0mm, Single Nut)



X20 DRJ-0009
V-type Joint
(12.0mm, Double Nut)



X20 DRJ-0010
Harness Clamp



X20 DRJ-0011
Bushing Set



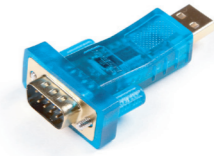
X4 DCW-0001
Wheel (White, Ø60)



X1 DRQ-0001
AC Adaptor



X1 DRI-0002
Serial Cable
(DSUB 9Pin - 3P Audio Jack)



X1 DRI-0003
USB to Serial Gender



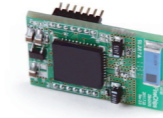
X1 DRI-0004
IR Receiver



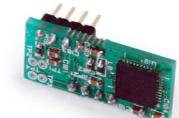
X1 DRI-0005
Remote Control



X1 DRI-0008
PSD Sensor



X1 DRI-0007
ZigBee (Option)



X1 DRI-0009
Gyro Sensor (Option)

1:1 SCALE

X40 DRA-0051
Nut (M2)

X10 DRA-0052
Nut (M3)

X25 DRA-0054
Bolt (PH/M 2.0X13)

X50 DRA-0056
Bolt (PH/M 2.0X4)

X20 DRA-0057
Bolt (PH/M 2.0X5)

X150 DRA-0058
Bolt (PH/M 2.0X6)

X30 DRA-0059
Bolt (PH/M 2.0X8)

X10 DRA-0061
Bolt (PH/M 3.0X6)

X20 DRA-0062
Bolt (PH/M 3.0X8)

X60 DRA-0063
Bolt (CH/T 2.0X4)

X80 DRA-0064
Bolt (PH/T 2.0X5)

X20 DRA-0067
Horn Bolt
(BH/T 2.6X8)

X16 DRA-0069
Hand Bolt (CH/T 1.7X4)

X4 Horn Bolt (BH/M 2.6X8)
(For Dummy Servos)



X4 DRA-0002
Harness (75mm)



X4 DRA-0003
Harness (100mm)



X6 DRA-0006
Harness (200mm)



X2 DRA-0007
Harness (300mm)



X1 DRA-0021
PSD Harness 3pin (200mm)



X1 DRA-0027
IR Receiver Harness 3pin (150mm)